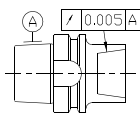
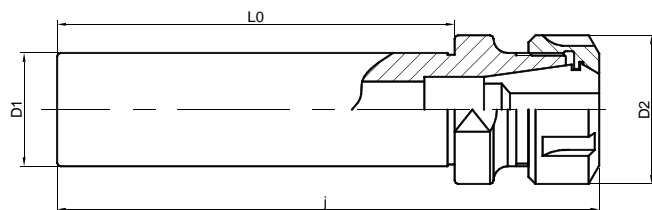


# 直柄ER彈性筒夾刀柄 – BC柄

## STRAIGHT SHANK ER COLLET CHUCKS-BC SHANK



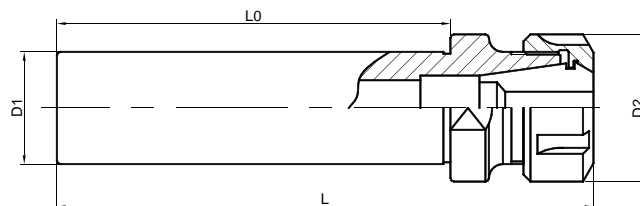
訂貨型號 Order Code	ØD1	ØD2	L0	L
BC16-ER11-120	16	19	120	146.5
-130			130	156.5
-ER16-130		30		169.5
BC20-ER16-120	20	30	120	159.5
-180 *			180	219.5
-ER20-120		34	120	165.5
-150			150	195.5
-170 *			170	215.5
-ER25-120		42	120	172
-170 *			170	222
-ER32-100			50	100
BC25-ER16-130	25		30	130
-170 *		170		209.5
-ER20-130		34	130	172
-170 *			170	212
-ER25-130			42	130
-170 *	170	222		
BC32-ER25-130	32	42	130	177
-170 *			170	217
-ER32-80		50	80	138
-130			130	188
-170 *			170	228

\* 註：當選用L>150的產品時，不得用於橫向銑削加工，否則可能產生震刀。  
When you select L>150mm model product, transverse milling is not allowed since it may cause vibration.

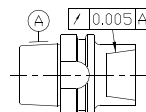
★ 以上規格均不含扳手及筒夾，如有需要請另外訂購。  
The above model does not contain spanners and collets ,please order them additionally if necessary.

續表>>  
Continue

BC 直柄系列 BC Shank



● M型使用小徑ER螺母  
The M type use small diameter ER nut



續表>>  
Continue

訂貨型號 Order Code	ØD1	ØD2	L0	L
BC16-ER11-120M	16	17.5	120	146.5
-ER16-120M		23.5	120	160
BC20-ER16-100M	20	23.5	100	140
-120M			120	160
-150M			150	190
-ER20-100M		28	100	145.5
-120M			120	165.5
-150M			150	195.5
-170M *			170	215.5
BC25-ER16-120M	25	23.5	120	160
-170M *			170	210
-ER20-120M		28	120	162
-170M *			170	212
-ER25-120M		35	120	172
-170M *			170	222
-210M *			210	262

\* 註：當選用L>150的產品時，不得用於橫向銑削加工，否則可能產生震刀。  
When you select L>150mm model product, transverse milling is not allowed since it may cause vibration.

★ 以上規格均不含扳手及筒夾，如有需要請另外訂購。  
The above model does not contain spanners and collets ,please order them additionally if necessary.

BC 直柄系列 BC Shank